



Building Excellence



WAUPACA COUNTY
HIGHWAY DEPARTMENT

We build and maintain a quality transportation system for
the safety and prosperity of present and future generations.

2019

Waupaca County Highway
Department Maintenance Facility

181700

April 2019

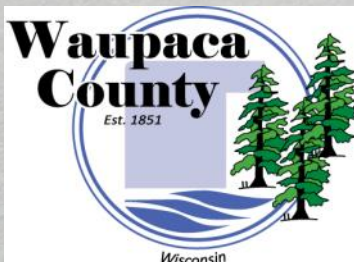


Table of Contents

Executive Summary
Action Items
Schedule
Progress Photos

Distribution List

Casey Beyersdorf
County Commissioner
Waupaca County
casey.beyersdorf@co.waupaca.wi.us
715.258.7152

Mike Rea
Architect
Bray Associates Architects
mrea@brayarch.com
414.226.0200

Paul Riederer
Project Manager
Miron Construction Co., Inc.
paul.riederer@miron-construction.com
920.969.7044

Our *commitment* reaches beyond construction;
our *passion* brings *dreams* to life.

Executive Summary



Waupaca County Highway Site Photo—April 6, 2019

- ◆ The Highway Department Building steel and precast erection is completed in Unit A—Office and Administration Area.
- ◆ Unit C—Vehicle Garage’s precast and steel erection is near completion.
- ◆ Roof insulation and membrane are in place over entire Unit A—Office and Administration Area. Exterior metal stud walls are framed and sheathed.
- ◆ Unit C Roofing and skylight installation has started.
- ◆ The Cold Storage Building steel framing is complete and wall sheathing is near completion.
- ◆ The Sand Storage Building foundation, walls, and roof are complete.
- ◆ The County Salt Storage Building foundation, walls, and roof are complete.

We exist to create...

Relationships

...built on honesty and integrity, with clients, partners, and employees.
At Miron, people come first.

Action Items

- ◆ The exterior asphalt area subbase is being placed on the East side—Unit C.
- ◆ The in-floor electrical and plumbing rough-ins are complete in Unit B.
- ◆ HVAC, plumbing, and electrical over-head rough-ins are in process.
- ◆ Unit B Concrete floors in Repair Shop, Parts Room, Mezzanine are poured complete.
- ◆ Precast and steel erection at Unit C and D are near completion.
- ◆ Precast caulking is ongoing.
- ◆ Unit A—Office Area interior metal stud framing is ongoing. Electrical, plumbing, sprinkler, and HVAC in wall and ceiling rough-ins are ongoing.
- ◆ Masonry in Unit B is in process and then Unit A will be ongoing.
- ◆ Spray-on-fire-proofing in Unit A is ongoing.



Asphalt Area Subbase-East Side-Unit C



Unit B Sprinklers—Plumbing Rough-ins In Progress

We exist to fulfill...

Dreams

...and assist our clients in turning their visions into realities.

Schedule Summary

- ◆ Roofing over Unit A –Office and Administration Area is complete. Wood timber and decking is complete. Metal panels and windows to start.



Unit A—Wood Timber and Decking in Place



Unit A—Roof Insulation & Membrane—Complete

- ◆ Concrete floor is complete in Unit B Repair Shops, Parts Room, Bulk Fluids Room, Service Pit and Vehicle Lift pit.
- ◆ Exterior metal stud framing and sheathing is complete at Unit A.
- ◆ Windows installation will begin.
- ◆ Masonry walls are ongoing in Unit B. Unit A masonry to follow.
- ◆ Sand Shed and County Salt Shed foundations, walls, and roofing is complete.
- ◆ Cold Storage Unit E steel erection framing is complete. Metal siding is in progress.

We exist to serve each...

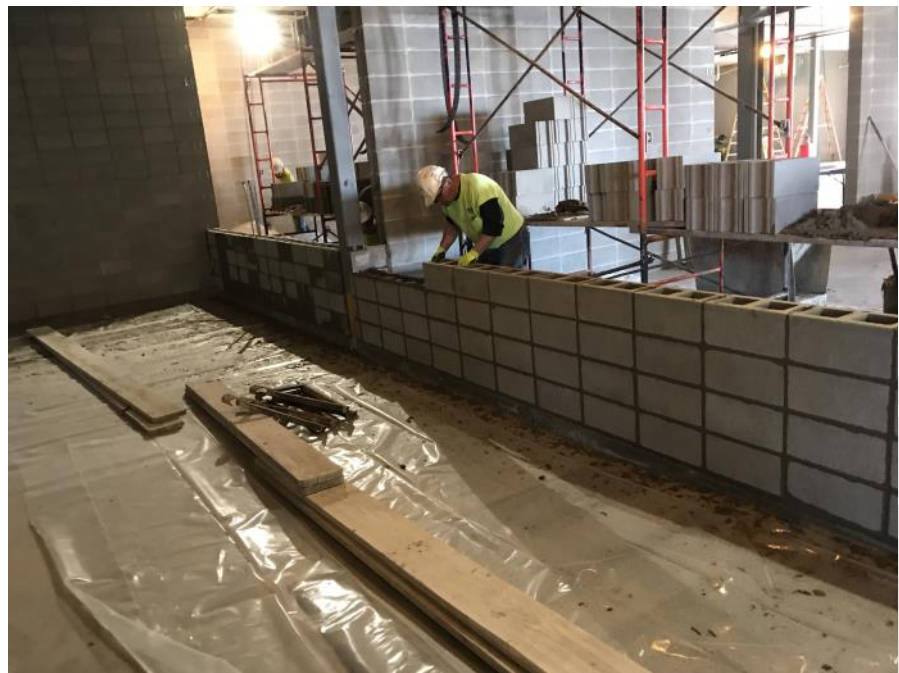
Community

...in which we live and work, giving back whenever and wherever we can.

Progress Photographs



Unit C Roofing Ongoing



Masonry Walls Ongoing—Bulk Fluids Floor

Progress Photographs



Sand & Salt Shed ready for Overhead Doors



Unit E—Steel Framing and Siding

Progress Photographs



Unit A Office Exterior Studs & Sheathing



Floors in Unit B Complete